

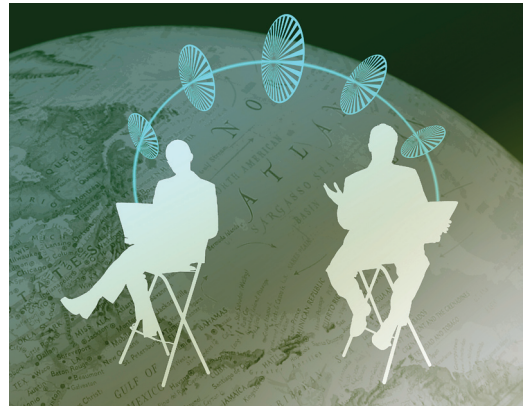
Faxcom Suite for Windows

Enterprise Fax Management

- Extends fax capabilities to Outlook users, SMTP mail users, Web browser users and Biscom's FAXCOM Client for Windows users.
- Uses the Microsoft Management Console (MMC) to manage all aspects of the fax service.
- Supports integration with Active Directory and Active Directory Group Policy - without requiring you to extend the schema.
- Integrates with Lightweight Directory Access Protocol (LDAP) for fax user directory management.
- Provides Windows users with a workflow-optimized fax client.

Integrates Windows Network Clients with FAXCOM Servers

FAXCOM Suite for Windows integrates an organization's users with FAXCOM Fax Servers by enabling an administrator to create one or more FAXCOM Queues the users access in order to send and receive faxes. Using the MMC-based administration utility for FAXCOM Suite for Windows, the administrator - without leaving his/her administrative desktop - can remotely create a FAXCOM Queue on the appropriate Windows Server or Workstation (including the FAXCOM Server itself), and also configure, troubleshoot and remove the FAXCOM Queue. Once the administrator creates and configures the FAXCOM Queue, he/she can use any of the following methods to assign users to the queue: manually create FAXCOM Queue users; import NT domain users to be FAXCOM Queue users; give Active Directory or LDAP-based users access to the queue; and/or give email domain addresses access to the queue. Once the users are assigned to the FAXCOM Queue, they can send and receive faxes via the applications made available to them by the administrator, which include: a Workflowoptimized FAXCOM Client, a FAXCOM Client Website, and any mail client that connects to the FAXCOM Queue via SMTP mail, such as Exchange Server.



FAXCOM Suite for Windows is scalable to fit the needs of any organization - whether the organization needs only one FAXCOM Server running one FAXCOM Queue, or a bank of FAXCOM Servers located in a telephony center supporting many FAXCOM Queues distributed throughout a worldwide network. In the latter case, one department might have the responsibility for managing how users access the fax service - without having to be concerned with telephony issues - while another department might have the responsibility for managing the connection of the fax servers to the outside phone network. In both cases, FAXCOM Suite for Windows provides a platform that makes it easy to expand fax integration to any new areas, applications and/or departments that may require fax integration in the future.

Faxcom Suite for Windows

Regardless of the size or scope of your Windows network, FAXCOM Suite for Windows lets you use one tool to do any or all of the following simultaneously:

- Add Exchange Connectors/SMTP Gateways that enable email users to send and receive faxes.
- Install an optional Outlook fax extension that provides Exchange/SMTP users with additional fax options.
- Install workflow-optimized Windows desktop fax applications that integrate fax into business workflows.
- Add Websites to enable browserbased users to send and receive faxes via the Web.
- Integrate with the Active Directory User List and Group Policy to enable all management of fax users to be performed within the Active Directory management tools.
- Integrate with any other LDAPbased server to leverage existing user management tools to include fax.

Requirements

FAXCOM Suite for Windows has the following requirements:

Exchange Connector/Exchange 2000/2003

- Exchange 2000/2003 Enterprise Edition with at least one mailbox store

SMTP Gateway

- Windows 2003 or Windows 2000 Server/Professional with IIS installed; for IIS, Suite requires only that the SMTP Service be running.

Fax Extension (Outlook)

- Outlook 2000 SP2 or higher

FAXCOM Client for Windows

- Windows 98, NT, XP, 2000 Professional

Web Client

- Windows 2000/2003 IIS Server running IIS 4.X or higher

FAXCOM Queue Component

- Windows 2000/2003

Administration Component

- Windows 2000, XP, or 2003

FAXCOM Fax Server

- Version 5.4.601 or higher