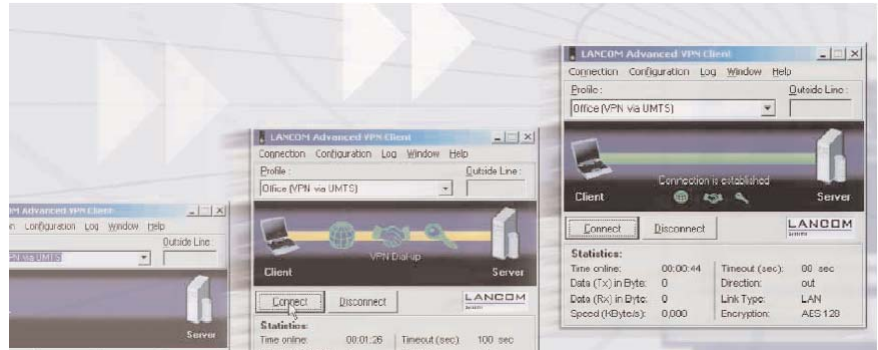


WS/Advanced VPN Client

VPN Software
for Mobile
Phone Users



VPN software client for mobile users

- Secure, encrypted corporate network access when travelling
- Supports Windows XP, 2000, NT, ME and 98SE
- Profiles for LAN/WLAN, analog/DSL modems, ISDN and GPRS/UMTS
- Integrated stateful inspection firewall
- AES encryption and IPCOMP data compression

More security.

Optimally tuned for all LANCOM VPN gateways, the LANCOM Advanced VPN Client offers highly comprehensive security functions that are suited to any scenario: IPSec encryption with AES or 3-DES, IPCOMP data compression, extended authentication (X. auth, EAP), support of digital certificates and hardware tokens, an integrated stateful inspection firewall. The firewall features situation-aware and application-aware rulesets by automatic discovery of the present network environment, and an automatic Hot Spot detection for uncompromised security at any location..

More convenience.

The installation Wizards that are included enable quick and easy VPN integration. Dial-in functions are supported by a range of profiles. Where no LAN or WLAN access is available, the Client takes care of the dial-in procedure with analog or DSL modems, ISDN, GPRS or UMTS devices. The dynamic DNS function in the LANCOM VPN gateways enable even standard DSL connections with dynamic IP addresses to be used for VPN dial-in access. With the LANCOM user management and the LANmonitor, even larger installations can be handled centrally.

More performance.

The versatility of the LANCOM Advanced VPN Client makes it the ideal mobile companion for business travellers: This includes the 0190er dialler protection, the automatic channel bundling, or the different start-up options that the client can integrate directly into the Windows login. The automatic connection establishment tools offer wide-ranging costcontrol functions and a constant overview of charges, online time, and transfer volumes. Large-scale installations can be supported with the optional rollout tools.

Wireless & Security

WS/Advanced VPN Client SPECIFICATIONS

Operating systems	Windows XP, Windows 2000, Windows NT, Windows ME and Windows 98SE, Windows CE on request Languages English and German
Communication	Communication only via secured VPN tunnel or with simultaneous unsecured Internet access
Connection management	Manual or automatic connection establishment, adjustable hold-times with automatic connection establishment, charges, time and connection limit with warning, ISDN channel bundling with adjustable threshold value
Connection types	VPN connection over existing IP connection (LAN /WLAN) or direct management of analog and DSL modems (PPPoE), ISDN adapters (CAPI 2.0), GPRS or UMTS cards. Alternative direct dial-in without encryption (e.g. ISDN). Supports up to 5 remote networks per access profile
Protocols	All IP-based protocols, NetBIOS/IP (Windows Networking), PPP, PPPoE and PPTP
Suitable VPN remote devices	All LANCOM products of the series 1600, 1700, 1800, 3000, 4000, 6000, 7000 and 8000, with LCOS version 3.42 or later
Third-party manufacturers	Astaro, Bintec, Cisco, Enigmatec, FreeSwan, NCP, Netscreen, Nokia, Microsoft, Sonicwall, Symatec, Watchguard, ...
Notices	- An up-to-date compatibility list can be found under www.lancom.de in the section Service&Support - With respect to the precise range of functions, please observe the documentation specific to the remote device - Supported are devices with fixed IP addresses or with DNS-resolvable names (Dynamic DNS with dyn.IP)
VPN/IPSec	Standard conform IPSec with ESP (Encapsulation Security Payload) and/or AH (Authentication Header)
Encryption	3-DES (168 bit), AES (128, 192 or 256 bit), Blowfish (128 bit), RSA (1024 or 2048 bit)
Hashes	MD-5 or SHA-1
KE operating modes	IKE with pre-shared keys or certificates IKE Main or Aggressive Mode, DH groups 1, 2 and 5. Re-keying after adjustable transfer volumes or time. In combination with LANCOM VPN remote sites, an IKE extension enables separate pre-shared keys to be used for each user in Aggressive Mode as well.
Additional functions	X.auth for username/password authentication ConfigMode for assignment of IP parameters (local IP address, DNS and WINS server) to the client IPCOMP data compression (LZS) for optimal bandwidth exploitation Dead-Peer-Detection (DPD) for connection monitoring NAT-Traversal (NAT-T) to overcome routers not capable of IPSec masking, or when using AH
PKI	Public Key-Infrastructure according to X.509v3, Entrust SmartCards: PKCS#11, TCOS 1.2 and 2.0 over CT-API or PC/SC Soft certificates: PKCS#12 PIN rules: administration rules for complex PINs Revocation lists: Control of the CRL and ARL (Certificate / Authority Revocation List) Certificate extension: Control of, and notice about, a certificate's validity period One-Time-Password (OTP): Convenient entry through separate PIN and password
Firewall	Stateful inspection, direction-dependant packet filter with IP and port ranges per protocol* LAN adapter protection to protect PCs with active VPN connections from attacks from other LAN users, IP broadcast and NetBIOS/IP filter
Installation	Tailor-made Setup Wizards are available for all types of connection
Administration	Password protection for configuration and profile management, configuration rights can be defined for each function area, display/hide parameter fields
Diagnosis	Red/yellow/green symbol depending on connection status, detailed connection statistics, logging of connection establishment/termination including IPSec error management, trace tool for error diagnosis
Other functions	EAP-MD5 for extended authentication of layer-2 devices such as switches or WLAN access points
Service	Support via hotline and Internet 30-day demo version from www.lancom.de/download or on the LANCOM CD
Extent of supply	CD with software, licence key, printed manual (English, German) Sale of the full version only via LANCOM partners (distribution, specialist resellers and system vendors)
Item numbers	61600 LANCOM Advanced VPN Client (single licence, for Windows 98SE - XP)
	61601 LANCOM Advanced VPN Client (10 licences, for Windows 98SE - XP)
	61602 LANCOM Advanced VPN Client (25 licences, for Windows 98SE - XP)

* automatic discovery of the network environment, detection of WLAN Hot Spots, application-specific rules